

We want to grow with you



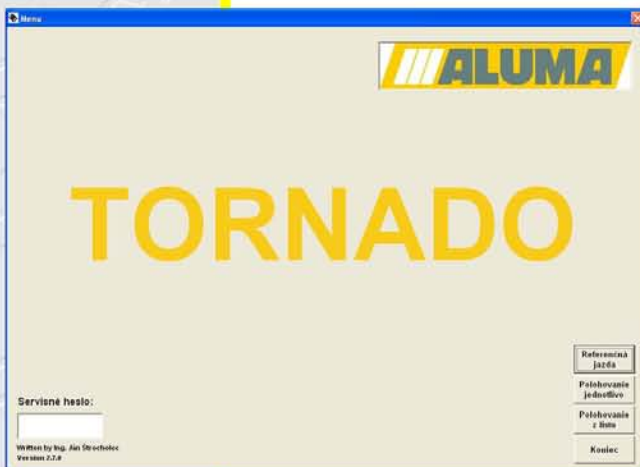
TORNADO SN

CNC length stop

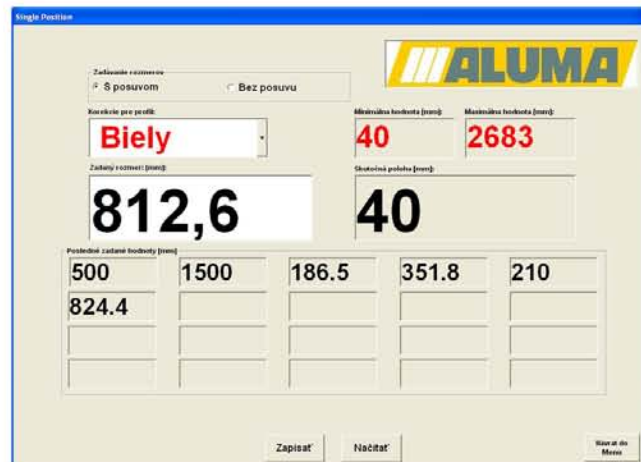


TORNADO SN - CNC length stop

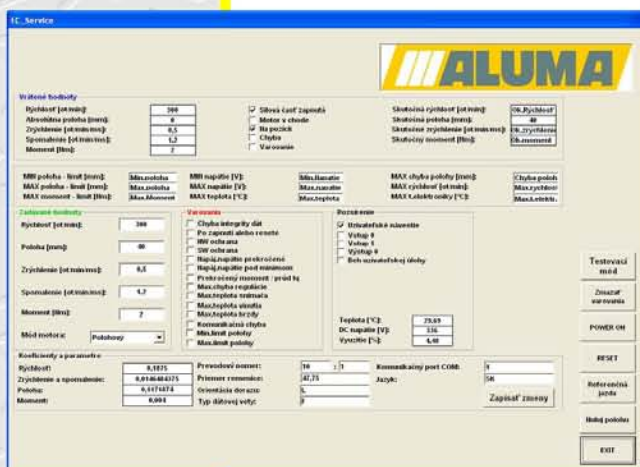
- CNC length stop – positioning accuracy $\pm 0,1$ mm.
- PC with operation system WINDOWS XP Professional, dual-core processor INTEL, HDD 230 GB, RAM 2 GB, display 15".
- Device can be connected to all single-purpose machines making operations as cutting, drilling, milling, screwing, punching.
- Measure transmission by keyboard, network or USB flash drive.
- Speed, dynamics of movement as well as torque parameter are by software adjustable values according to the user's needs.
- Travel length max. 2 715 mm – other length on demand.



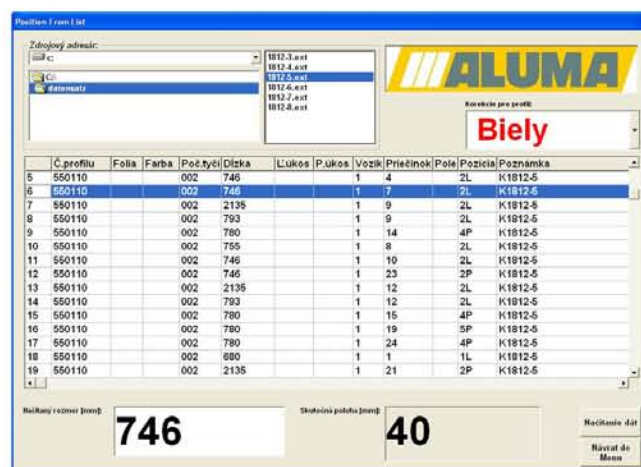
- reference run
- input menu



- manual position input by keyboard
- storage and display of last 20 positions



- service menu
- speed, dynamics of movement as well as torque parameter are by software adjustable values according to the user`s needs



- PC control system with positioning list
- Measure transmission by:
 - Network
 - USB flash drive
 - Memory card



- Practical usage example: Length stop connected to a glazing bead saw.